

Be a part of The Arcade

Make your mark in Dewsbury

Units 1, 27 & 29
23, Market Place

The three-storey unit faces out on to Market Place and the Town Hall underneath the large stain glass feature at the entrance to The Arcade and with ample room to put tables and chairs on the Market Place frontage. The unit has external access and can trade until 12am (Sui Generis planning use). It has been refurbished to retain its Victorian feel in a modern setting and will benefit from the footfall to the 16 shops within the Arcade and the events space.

Its unusual feature is a second floor with five rooms accessible from a lobby. It will be leased in a brick-finish state ready for tenant fit out with access points for drainage, toilets and electricity (no gas). It will ideally suit a training / health user who can make the ground floor public facing and use the upper floors for one-to-one or small group work.

Rents and service charges (without VAT)

The rented area includes all the space on the site plans below

23 Market Place - £11,692 (Ground and First Flr - Units 1 and 27),
+ 2nd Flr (Unit 29) £11,148 (negotiable)

 **THE ARCADE**
DEWSBURY | EST. 1899



**Scan here to see our
fly throughs**

For any enquiries please contact:

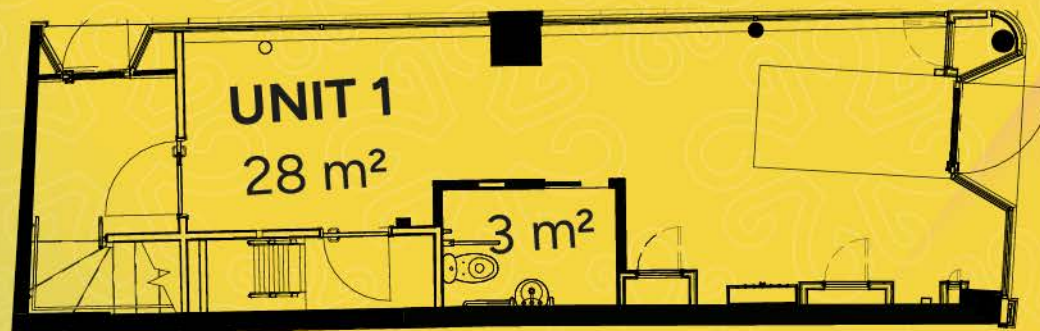
Chris Hill

M: 07968 968862

E: chris.hill@arcade-dewsbury.org



GROUND FLOOR



FIRST FLOOR



SECOND FLOOR

